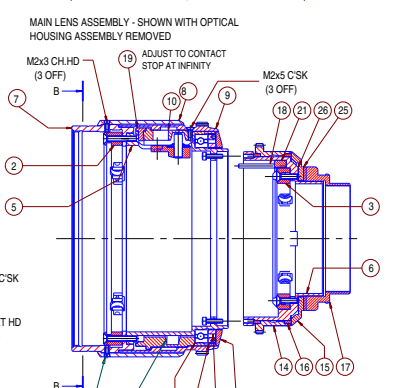
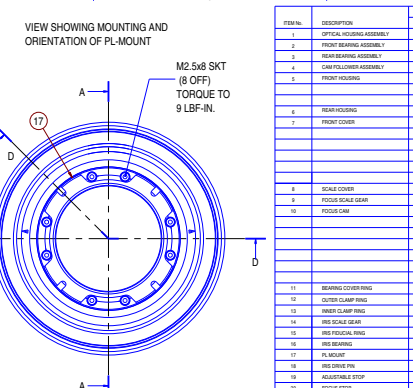


ASSEMBLE 2 OFF 45-10277 EACH END. BEND DOWN 3mm OF LONG TANG ON 2 (OPPOSITE HANDS). LOCK WITH FLAT COMPONENTS. T2 STOP TO BE IN CONTACT AT T2.



LIGHTLY SMEAR CAM TRACK WITH C40-C0128. (FIN)RELEASE MP2(2)

ALL CLAMP RINGS TO BE SEALED WITH SHELLAC OR BLACK PAINT ON FINAL ASSEMBLY.



		FOCAL LENGTHS										CODE	QTY.
ITEM NO.	DESCRIPTION	14	18	25	32	40	50	75	100				
1	OPTICAL HOUSING ASSEMBLY	X	X	X	X	X	X	X	X	X	X	45-098	1
2	FRONT BEARING ASSEMBLY	X	X	X	X	X	X	X	X	X	X	45-098	1
3	REAR BEARING ASSEMBLY	X	X	X	X	X	X	X	X	X	X	45-098	1
4	CAM FOLLOWER ASSEMBLY	X	X	X	X	X	X	X	X	X	X	45-098	1
5	FRONT HOUSING	X	X	X	X	X	X	X	X	X	X	45-098	1
6	REAR HOUSING	X	X	X	X	X	X	X	X	X	X	45-098	1
7	FRONT COVER	X	X	X	X	X	X	X	X	X	X	45-098	1
8	SCALE COVER	X	X	X	X	X	X	X	X	X	X	45-098	1
9	FOCUS SCALE GEAR	X	X	X	X	X	X	X	X	X	X	45-098	1
10	FOCUS CAM	X	X	X	X	X	X	X	X	X	X	45-098	1
11	IRIS DRIVE	X	X	X	X	X	X	X	X	X	X	45-098	1
12	IRIS BEARING CLAMP RING	X	X	X	X	X	X	X	X	X	X	45-098	1
13	CLAMP CLAMP RING	X	X	X	X	X	X	X	X	X	X	45-098	1
14	IRIS CLAMP RING	X	X	X	X	X	X	X	X	X	X	45-098	1
15	IRIS FOCAL RING	X	X	X	X	X	X	X	X	X	X	45-098	1
16	IRIS BEARING	X	X	X	X	X	X	X	X	X	X	45-098	1
17	PL-MOUNT	X	X	X	X	X	X	X	X	X	X	45-098	1
18	IRIS DRIVE PIN	X	X	X	X	X	X	X	X	X	X	45-098	1
19	ADJUSTABLE STOP	X	X	X	X	X	X	X	X	X	X	45-098	1
20	FOCUS STOP	X	X	X	X	X	X	X	X	X	X	45-098	1
21	IRIS STOP	X	X	X	X	X	X	X	X	X	X	45-098	1
22	FOCUS BEARING	X	X	X	X	X	X	X	X	X	X	45-098	1
23	FRONT LENS CAP	X	X	X	X	X	X	X	X	X	X	45-098	1
24	REAR LENS CAP	X	X	X	X	X	X	X	X	X	X	45-098	1
25	BACK FOCUS SHIM SET	X	X	X	X	X	X	X	X	X	X	45-098	1
26	IRIS SHIM SET	X	X	X	X	X	X	X	X	X	X	45-098	1

DRG NO. **S4000-00034** SHEET 1 OF 1

TITLE  
OVERALL ASSEMBLY DRAWING  
14mm - 100mm S4 LENSES

MATERIAL

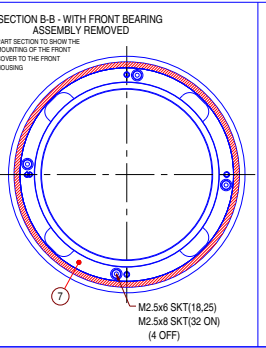
FINISH

MACHINE FINISH  
Unless otherwise stated

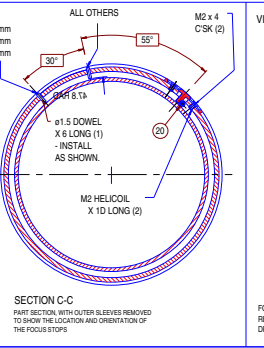
DRAWN BY: s4

DATE: 27Sep96

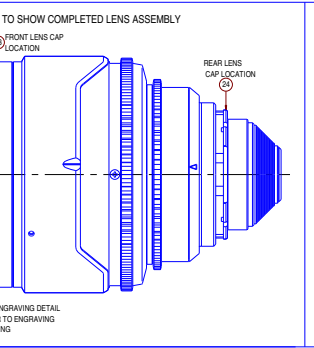
ISSUE No. DATE CHANGE No.  
1 10-02-00  
2 16-02-00 0053



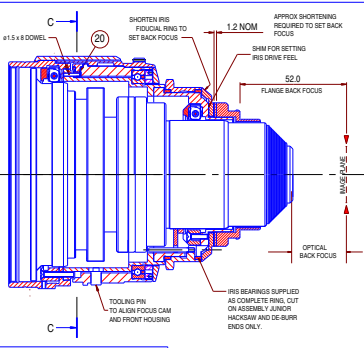
PART SECTION FROM THE MOUNTING OF THE FRONT COVER TO THE FRONT BEARING



PART SECTION WITH OUTER SLEEVES REMOVED TO SHOW THE LOCATION AND ORIENTATION OF THE FOCUS STOPS

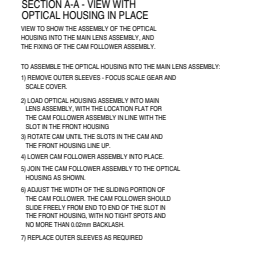


FOR ENGRAVING DETAIL REFER TO ENGRAVING DRAWING

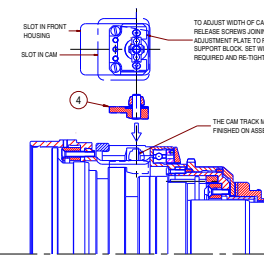


VIEW TO SHOW SETTING OF IRIS DRIVE, BACK FOCUS AND ASSEMBLY OF THE FOCUS STOPS.

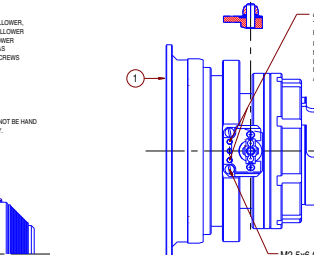
THIS DRAWING COVERS THE WHOLE OF THE S4 RANGE - THE LENS SHOWN IS THE 18mm LENS



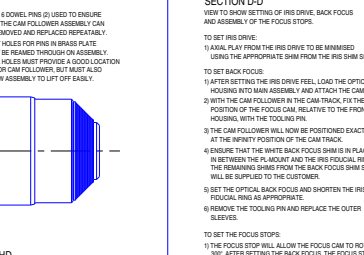
VIEW TO SHOW THE ASSEMBLY OF THE OPTICAL HOUSING INTO THE MAIN LENS ASSEMBLY, AND THE FIXING OF THE CAM FOLLOWER ASSEMBLY.



TO ADJUST THE WIDTH OF THE SLIDING PORTION OF THE CAM FOLLOWER, THE CAM FOLLOWER SHOULD SLIDE FREELY FROM END TO END OF THE SLOT IN THE FRONT HOUSING, WITH NO TIGHT SPOTS AND NO MORE THAN 0.02mm BACKLASH.



TO SET THE FOCUS STOP:  
1) THE FOCUS STOP WILL ALLOW THE FOCUS CAM TO ROTATE 300° AFTER SETTING THE BACK FOCUS. THE FOCUS STOP SHOULD BE SET TO ALLOW NO FOCUS TRAVEL, PART INFINITY.



TO SET THE FOCUS STOP:  
1) THE FOCUS STOP WILL ALLOW THE FOCUS CAM TO ROTATE 300° AFTER SETTING THE BACK FOCUS. THE FOCUS STOP SHOULD BE SET TO ALLOW NO FOCUS TRAVEL, PART INFINITY.

STATUS: M

USED ON:

3rd ANGLE PROJECTION

DRG. CONFORMS TO S3308

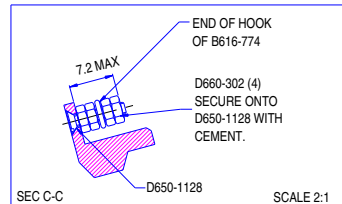
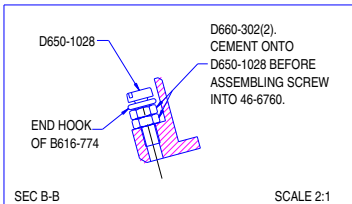
SCALE	DMN IN	DRG SIZE
1:1	MM	A1

COOKE OPTICS LIMITED  
LEICESTER ENGLAND

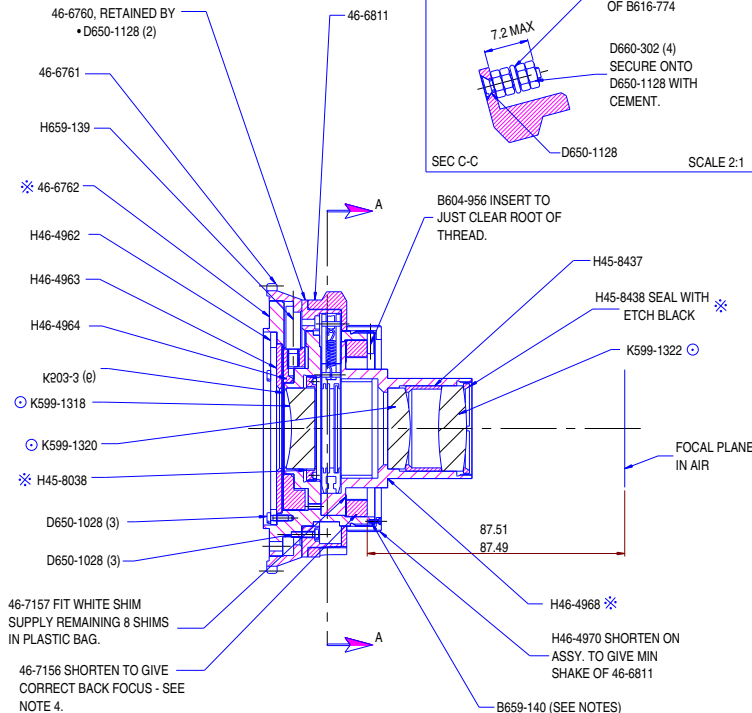
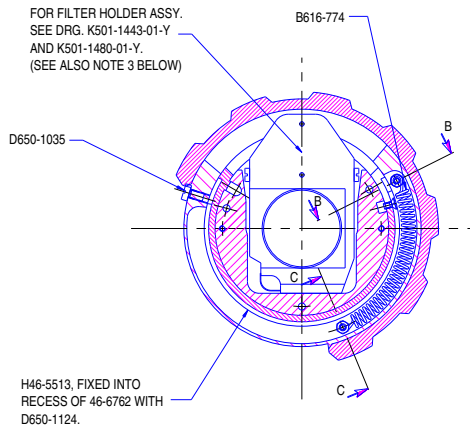
Drawn Date: 1996

DRG NO. **S4000-00034** SHEET 1 OF 1





FOR FILTER HOLDER ASSY.  
SEE DRG. K501-1443-01-Y  
AND K501-1480-01-Y.  
(SEE ALSO NOTE 3 BELOW)



## NOTES

- ASSEMBLY OF IRIS (A) BEFORE ASSEMBLING H46-4964 AND H46-4963, CHECK THAT ALL HOLES AND SLOTS ARE FREE FROM BURRS, AND THAT IRIS RIVETS ARE A FREE FIT; COMPONENTS TO BE THOROUGHLY CLEAN AND DRY. (B) BEFORE ASSEMBLING B659-139 VIA SLOT IN 46-6762, APPLY LOCTITE 222 SCREWLOCK SPARINGLY INTO TAPPED HOLE IN H46-4964. (C) WITH B659-139 POSITIONED 1" FROM THE MAX. APERTURE END OF THE IRIS SLOT, (THIS EQUALS 3/4mm ON THE DIAMETER WHICH CARRIES THE IRIS SCALE ZERO LINES), ROTATE H46-4963 UNTIL IRIS LEAVES TOUCH A PLUG OF 26.5mm DIA. THEN TIGHTEN D650-1026 (3) SCREWS. APPLY SHELLAC TO HEADS OF THESE SCREWS TO LOCK H46-4963 AGAINST ROTATION. (D) THE TWO T SCALES ARE ENGRAVED WHEN THIS UNIT IS ASSEMBLED TO ZOOM UNIT SEE 100-6502 AND 100-6503.
- B659-140. SCREW H46-4970 FIRMLY UP TO 46-6762 SHOULDER, PICK UP TAPPED HOLE IN H46-4970 AND SPOT THROUGH INTO 46-6762. DRILL  $\phi 1.4 \times 2.2$  DEEP. CLEAN AWAY ALL SWarf AND FIT B659-140.

- FILTER HOLDER UNITS. CHECK THAT K501-1443-01 FILTER HOLDER SLIDES EASILY INTO ITS SLOT BOTH WAYS ROUND, AND THAT WHEN THE FILTER SLOT COVER IS ROTATED AGAINST ITS SPRING LOADING, THE FILTER HOLDER HANDLE SWINGS EASILY INWARDS AND OUTWARDS WITHOUT JAMMING THE MOVEMENT OF THE COVER. REPEAT THIS TEST FOR K501-1480-01 UNIT.

- MECHANICAL BACK FOCUS. SHORTEN 46-7156 TO GIVE THE 87.51-87.49 DIMN WHEN FITTED TO K100-6512-01 WITH WHITE SHIM FROM 46-7157 IN PLACE. RETAIN WITH SCREWS D650-1028(2).

- PLACING TO STOCK. PUT TO STOCK WITH REAR LENS CAP 77-135 FITTED AND WITH IRIS CLOSED TO MIN. APERTURE AND L.H. END SEALED OFF. H46-3641 ADAPTOR CLAMP RING SHOULD BE ASSEMBLED LOOSELY ONTO THREAD OF H46-4970, AND BOTH FILTER HOLDERS, I.E K501-1443-01 AND K501-1480-01, SHOULD ACCOMPANY EACH UNIT.

\* THESE COMPONENTS COMPRISE K510-977-01 GLASS BORING ASSY.

○ THESE COMPONENTS COMPRISE K598-235 GLASS SET

DRG NO.

K100-6522-01

SHEET 1

OF 1

TITLE

18-100 T3.0 REAR UNIT

MATERIAL

FINISH

MACHINE FINISH

Unless otherwise stated

DRAWN BY

ppn

DATE

5Jan96

ISSUE No.

DATE

CHANGE No.

1

26-01-96

2

19-12-96

H5727

3

29-04-97

H5886

STATUS

M

USED ON

K100-6502

K100-6503

3rd ANGLE PROJECTION



DRG. CONFORMS TO BS308

SCALE

DIMN IN

DRG SIZE

1:1

MM

A2

*Cooke* OPTICS LIMITED

LEICESTER ENGLAND

plotted by

jf

12May97

DRG NO.

K100-6522-01

SHEET 1

OF 1



