



CLENSCONTROL

USER GUIDE

as of November, 14th 2008

Version 0801

This user guide is based on
the Software Version 3.3.4

Technical specifications are
subject to change without notice!

by Martin Waitz



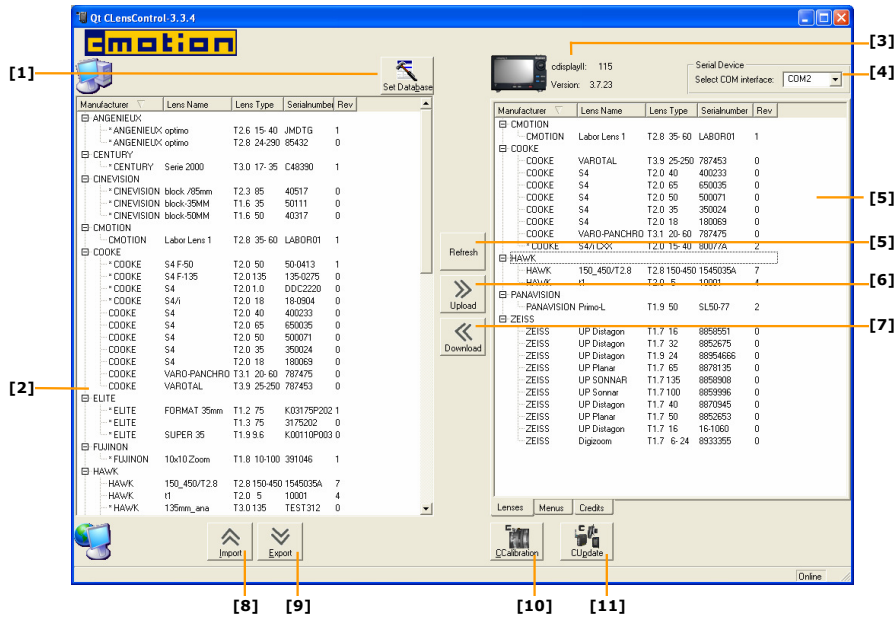
Table of Contents

Table of Contents	3
1. Software description	1
1.1. Detailed clenscontrol description	1
2. Preparation	2
2.1. Install clenscontrol at the PC	2
2.2. Connecting the cdisplay II to the PC	2
2.3. Start clenscontrol	2
3. Basics	5
3.1. Detailed lens database description.....	5
3.2. Upload lenses	7
3.3. Download lenses	8
3.4. Refresh database	9
3.5. Export lenses.....	10
3.6. Import lenses	11
4. Standard functions	12
4.1. Set lens database.....	12
4.2. Menu	13
4.2.1. Menu activation.....	13
4.2.2. Visible programs	13
4.2.3. About text.....	13
4.3. Credits.....	14
4.4. Start cupdate.....	14
4.5. Start ccalibration.....	14
5. Problem handling	15
5.1. Cannot open COMx port	15
5.2. No lens loaded	15
6. Install cmotion software on PC	16
6.1. Loading new USB driver to the PC	18

1. Software description

clenscontrol represents a PC program to copy lens data from the PC to the *cdisplay II* and vice versa. Furthermore you can choose between different settings for the *cdisplay II* on the computer.

1.1. Detailed clenscontrol description



1	Set database button	establishes a new database
2	PC database	shows all lenses stored on the PC database
3	<i>cdisplay II</i> information field	shows the serial number of the <i>cdisplay II</i> and the number of software being used on the <i>cdisplay II</i>
4	Select COM interface dropdown field	RS 232 Serial Interface (COM Board). Different COM interfaces can be selected
5	<i>cdisplay II</i> database	who shows all lenses stored on the <i>cdisplay II</i>
6	Refresh button	to update the databases
7	Upload button	to copy a lens from the PC to the <i>cdisplay II</i>
8	Download button	to copy a lens from the <i>cdisplay II</i> to the PC
9	Import button	to import external saved databases
10	Export button	to export databases
11	<i>ccalibration</i> button	starts the program <i>ccalibration</i>
12	<i>cupdate</i> button	starts the program <i>cupdate</i>

2. Preparation

Note: The program *clenscontrol* runs with the following devices: *cdisplay* or *cdisplay II*. In general, this manual refers to the *cdisplay II*. In case of differences between the devices, the individual device type is specified.

Note: This manual is based on the following software status: *clenscontrol* – 3.3.4

2.1. Install clenscontrol at the PC

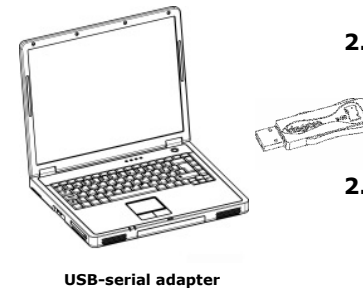
Please see the chapter 6 Install *cmotion* software on PC how to install the *clenscontrol* program.

2.2. Connecting the cdisplay II to the PC

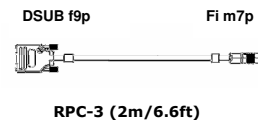
The *cdisplay II* should not be connected at this point in time!

1. If your PC is equipped with an RS232 interface, connect the RPC-3 cable's DSUB f9p connector direct to the PC.
2. If your PC does not have this interface use the USB-Serial adapter and connect to an available USB Port. The new hardware will be recognised automatically.

Note: Do not connect the *cdisplay II* to the cable at this point. This could result in the new hardware not initialising fully at the PC. You will receive a confirmation message when the new hardware is ready to use.



USB-serial adapter



RPC-3 (2m/6.6ft)

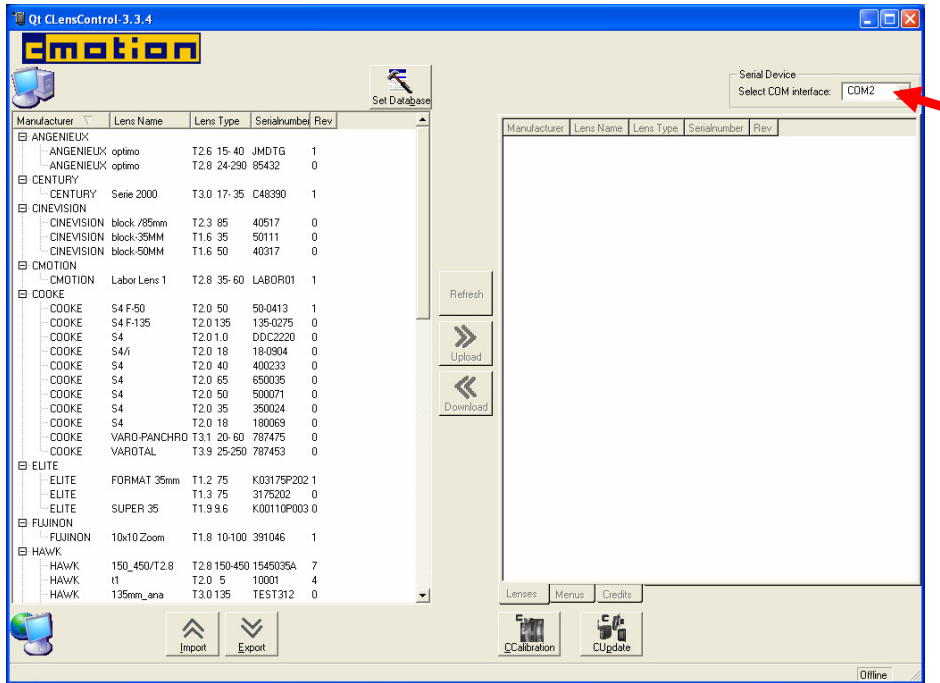
3. Plug in the RS power supply to the back of the update cable's DSUB f9p or and connect the RPC-3 or power the *cdisplay II* from the battery.

4. Connect the cable RPC-3 to the *cdisplay II*.

2.3. Start clenscontrol

1. Start the *clenscontrol* program "clenscontrol-3.3.0" (or higher version if installed).

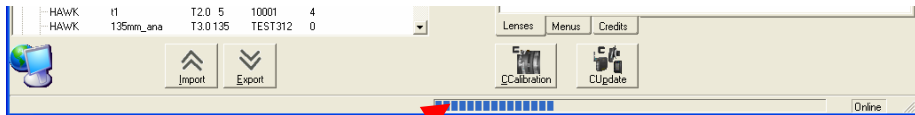
⇒ The following screen will open.



Note: The PC should select the COM Port automatically. If this is not the case, you can select it manually using the file expansion arrow.

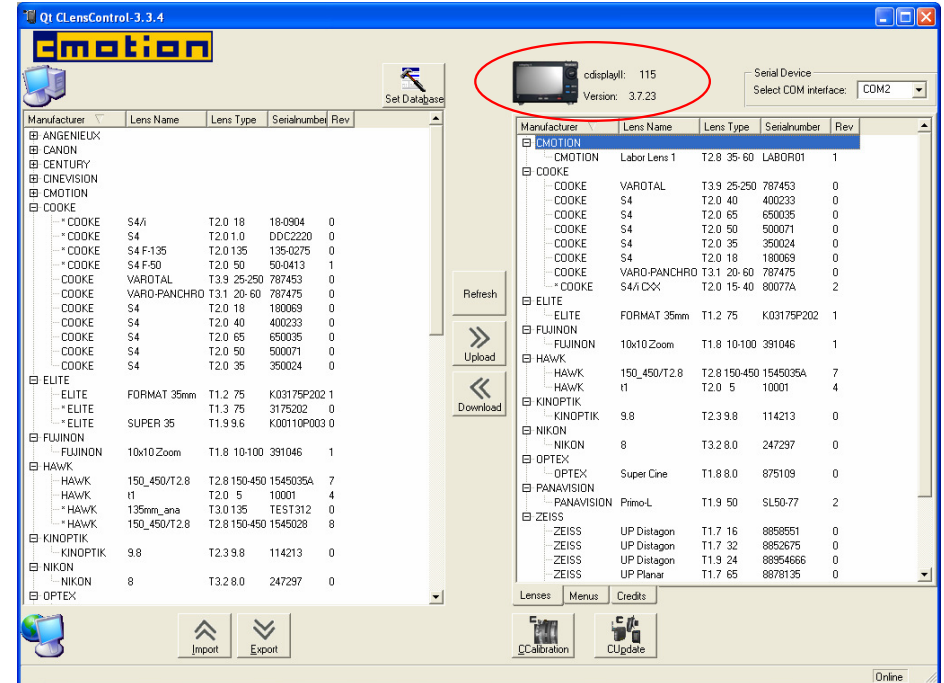
2. Turn on the *cdisplay II*

After the *cdisplay II* has booted, the lens data from the *cdisplay II* will be loaded into the right database window immediately.



Note: The blue balk shows that a database is currently being loaded.

When the loading has finished you see the following window:



The following settings appears:

- Icon of the *cdisplay II* appears
- Serial number of the *cdisplay II*
- Programm Version number
- Loaded lenses at the *cdisplay II*

If the window does not show any lenses, if the program starts with a warning message or if these 4 settings do not appear, please see the chapter 5 Problem handling.

3. Basics

This chapter deals with the basic settings of the software module *clenscontrol* which in detail means the upload, download, export and import of lenses. For information how to load lenses on the *cdisplay II* please refer to the userguide "cdisplay II".

3.1. Detailed lens database description

The program *clenscontrol* has 2 windows, which show you the available lenses:

- o PC lens database
- o *cdisplay II* lens database

You will find the lens data stored on the PC in the left window. The right window shows the lenses stored on the *cdisplay II*.

Note: If there aren't any lenses displayed on the left PC window, you will have to establish a database by using the Button [SET DATABASE] - please see chapter 4.1.

The following lens information will appear (columns):

- Manufacturer
- Lens Name
- Lens Type
- Serialnumber
- Rev

The information Manufacturer, Lens Name, Lens Type und Serialnumber allows you to identify the lens in the database clearly.

The column „Rev.“ specifies the number of revisions for the respective lens. By using the software *cdiscal* or *ccalibration* the lens can be edited. Any editing will increase the revision number.

Manufacturer	Lens Name	Lens Type	Serialnumber	Rev
EMOTION				
COOKE	VAROTAL	T3.9 25-250	787453	0
COOKE	S4	T2.0 40	400233	0
COOKE	S4	T2.0 65	650035	0
COOKE	S4	T2.0 50	500071	0
COOKE	S4	T2.0 35	350024	0
COOKE	S4	T2.0 18	180069	0
COOKE	VARO-PANCHRO	T3.1 20-60	787475	0
* COOKE	S4/CXX	T2.0 15-40	80077A	2
ELITE				
FUJINON				
HAWK				
KINOPTIK				
NIKON				
OPTEX				
PANAVISION				
ZEISS				

Manufacturer	Lens Name	Lens Type	Serialnumber	Rev
EMOTION				
COOKE	VAROTAL	T3.9 25-250	787453	0
COOKE	S4	T2.0 40	400233	0
COOKE	S4	T2.0 65	650035	0
COOKE	S4	T2.0 50	500071	0
COOKE	S4	T2.0 35	350024	0
COOKE	S4	T2.0 18	180069	0
COOKE	VARO-PANCHRO	T3.1 20-60	787475	0
* COOKE	S4/CXX	T2.0 15-40	80077A	2
ELITE				
FUJINON				
HAWK				
KINOPTIK				
NIKON				
OPTEX				
PANAVISION				
ZEISS				
ZEISS	UP Distagon	T1.7 16	8858551	0
ZEISS	UP Distagon	T1.7 32	8852675	0
ZEISS	UP Distagon	T1.9 24	88954666	0
ZEISS	UP Planar	T1.7 65	8878135	0
ZEISS	UP SONNAR	T1.7 135	8858908	0
ZEISS	UP Sonnar	T1.7 100	8859996	0
ZEISS	UP Distagon	T1.7 40	8870945	0
ZEISS	UP Planar	T1.7 50	8852653	0
ZEISS	UP Distagon	T1.7 16	16-1060	0
ZEISS	Digizoom	T1.7 6-24	8933955	0

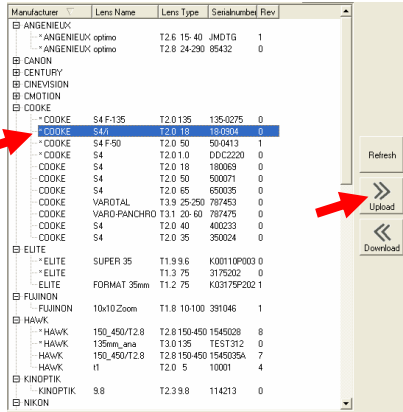
The lenses will be ordered by manufacturers. To display or hide the lens register click on the field "+" or "-".

You can also change the order of the lenses by clicking on the header of the respective column.

The screenshot shows the Qt ClensControl-3.3.4 application. The main window is titled "cdisplay II" and shows a list of lenses. The "Set Database" window is open, showing a list of lenses with columns for Manufacturer, Lens Name, Lens Type, Serialnumber, and Rev. A red arrow points to the "Refresh" button in the "Set Database" window.

Lenses marked by an „x“ will be stored only on this device e.g. the lens „cooke S4/i CXX“ is stored on the *cdisplay II* but not on the PC.

3.2. Upload lenses



Note: Upload refers always to the process of copying a lens to the *cdisplay II*.

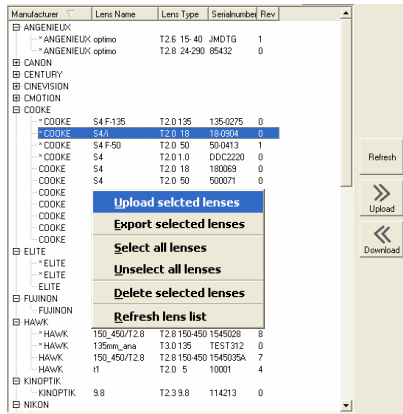
To copy lenses from the PC database to the *cdisplay II* please complete the following steps:

1. Select the required lens in the PC database.

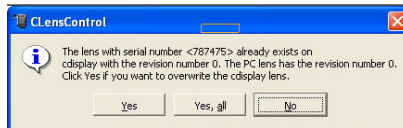
Note: A lens can be selected by pressing the left mouse button.

Note: If you want to choose more lenses hold the CTRL-Key on the keyboard click onto another lens in the database.

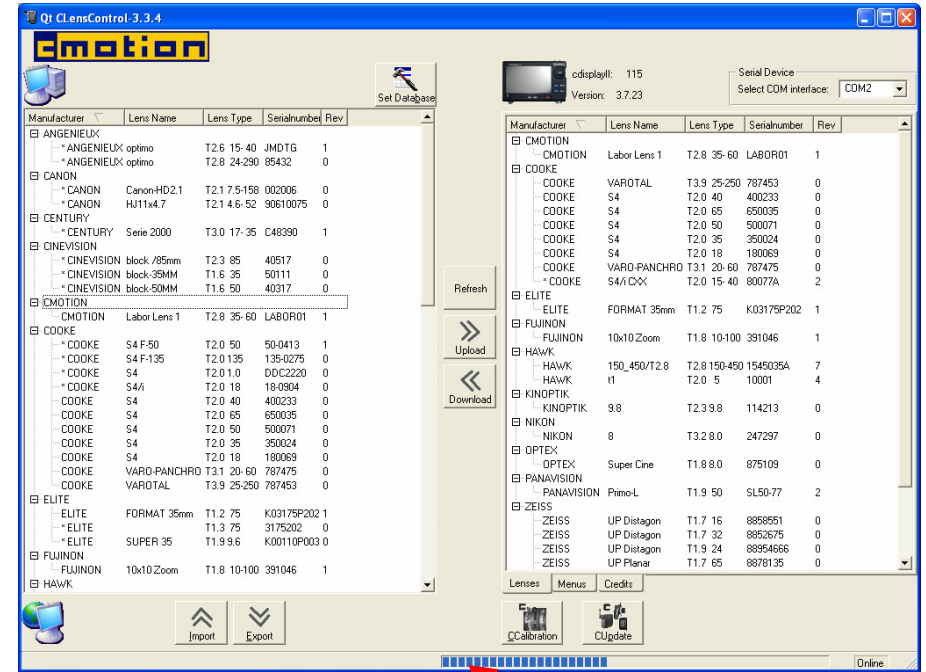
2. Press the button [UPLOAD] to copy the lens.



Note: By pressing the right mouse button you can select all lenses ("Select all lenses"). You can also copy all selected lenses by selecting "Upload selected lenses".



Note: If the respective lens is still available on the *cdisplay II* a warning message appears. You can either overwrite the already existing lens by pressing the [YES] button or cancel the process by pressing the [NO] button. If you copy more lenses you can also overwrite all lenses by pressing the button [YES, ALL].



Note: The blue balk shows that a database is currently being loaded.

3.3. Download lenses

Note: Download refers always to the process of copying a lens to the PC.

To copy a lens from the *cdisplay II*'s database to the PC please complete the following steps:

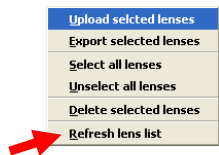
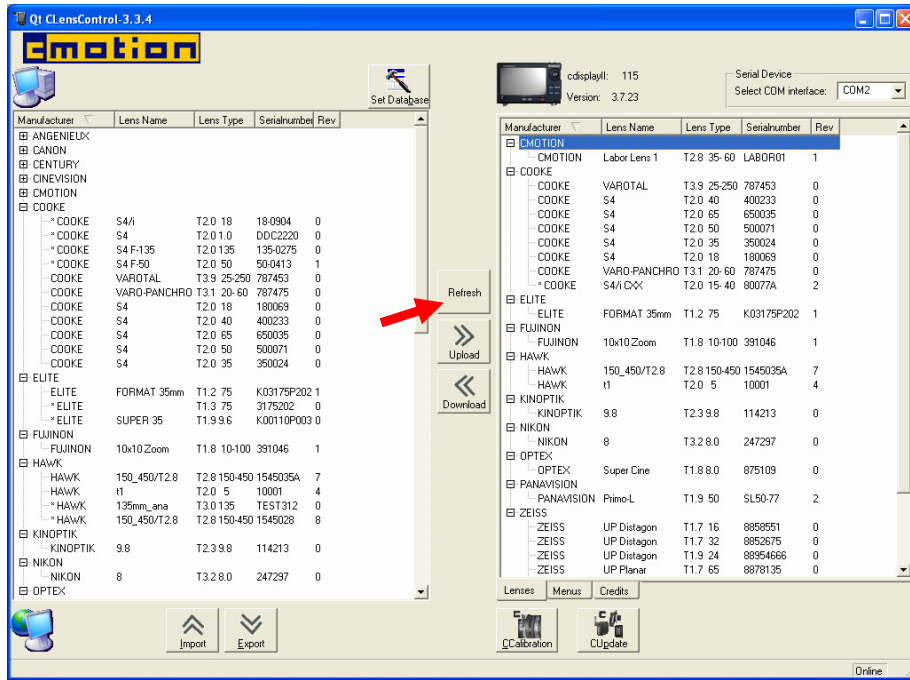
1. Select the required lens from the *cdisplay II* database.

Note: By pressing the CTRL-Key (on the keyboard) and selecting simultaneously another lens you can select several lenses at the same time.

2. By pressing the [DOWNLOAD] button the lens will be copied on the PC.

3.4. Refresh database

Press the button REFRESH to update both databases.



Note: You can also update both databases by pressing the right mouse button and selecting „Refresh lens list“.

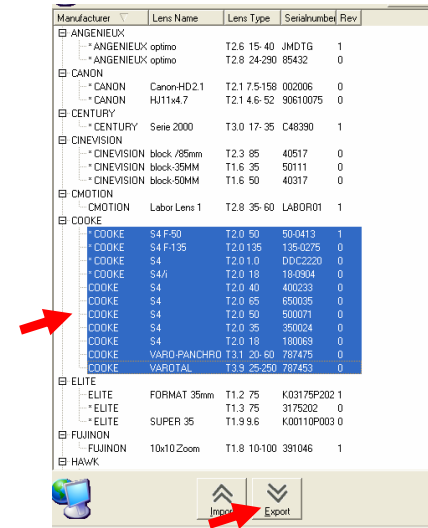
3.5. Export lenses

Lenses can be exported from the database to import them to another PC or to any other database.

1. Select the required lens in *cdisplay II's* database.

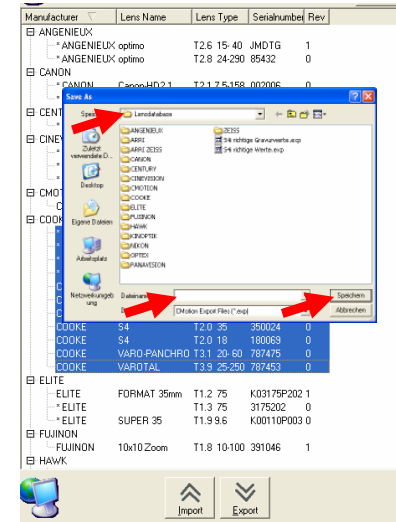
Note: By pressing the CTRL-Key (on the keyboard) and selecting simultaneously another lens you can select several lenses at the same time.

2. Press the button [EXPORT] to export all selected lenses.

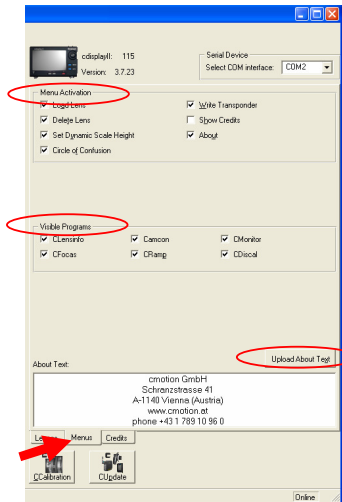


3. The window „Save As“ will appear. Select the required directory.

4. Enter a name and press the button [SAVE]. The selected lenses will now be saved with the required name as an .exp-file (e.g. lenses.exp) on the PC.



4.2. Menu



By pressing the button [MENU] the MENU Window will appear. This section allows you to customise *cdisplay II's* menu structure. You can also activate or block different software modules.

4.2.1. Menu activation

In the section "Menu Activation" of the window you can activate the respective functions on *cdisplay II's* menu by marking the checkbox.

Note: On the *cdisplay II* you can start the menu by pressing the [MENU] button. Please refer to the user guide "cdisplay II".

4.2.2. Visible programs

In the section „Visible Programs“ you can activate or block the different software modules to arrange *cdisplay II's* menu more clearly. As in the section „Menu Activation“ no check in the respective checkbox means that the function is blocked.

Note: On the *cdisplay II* you can start the program selection by pressing the [ENTER] button which is located on the scroll wheel.

Note: If a software module can't be activated there is no licence (credit) for the respective program available on the *cdisplay II*. Please see chapter 4.3 Credits.

4.2.3. About text

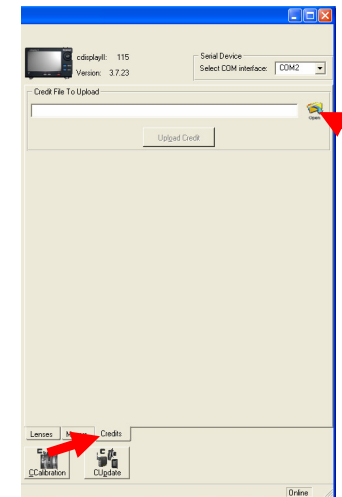
In the section „About Text“ an individual text can be entered which can be recalled on the *cdisplay II*.

1. Enter the required text.
2. Press the button [UPLOAD ABOUT TEXT] ⇒ the text will now be copied onto the *cdisplay II*.

View text on cdisplay II

Press the [MENU] button and select the submenu [ABOUT].

4.3. Credits



By pressing the button [CREDITS] the CREDITS Window will appear.

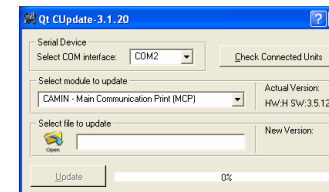
Credits act as licenses for the different software modules. By the use of credits the programs and special functions can be activated. In this section credits can be copied to the *cdisplay II*.

Please complete the following steps:

1. Press the button [OPEN]
2. The OPEN window of the operating system appears.
3. Select the required credit file.
4. Press the button [UPLOAD CREDIT] ⇒ the file is copied into the *cdisplay II*.

Note: Credit files will be sent by cmotion by mail.

4.4. Start cupdate



cupdate is a specially developed program to allow quick and easy update and management of software for each individual cmotion unit through a PC. Every cmotion unit is recognised automatically when connected to the PC and the current software version is displayed. Different software can then be selected from a PC file and updated within seconds.

For details please refer to user guide "cupdate".

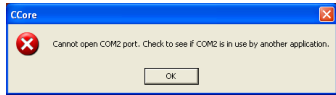
4.5. Start ccalibration

ccalibration enables users to create and edit the lens scales on the *cdisplay* via PC. In a step by step process, the user defines the corresponding values.

For details please refer to user guide "ccalibration".

5. Problem handling

5.1. Cannot open COMx port



When starting the program *clenscontrol* the error message „Cannot open COMx port“ appears.

Possible cause of error:

- Another running program on the PC blocks the serial interface.

Solution:

- Close the other program and restart *clenscontrol*.

5.2. No lens loaded

Possible cause of error:

- No lenses are stored on the *cdisplay II*

Solution:

- Copy lenses to the *cdisplay II*. Please see chapter 3.2 or use the *cmotion* software module *cdiscal*.

6. Install *cmotion* software on PC

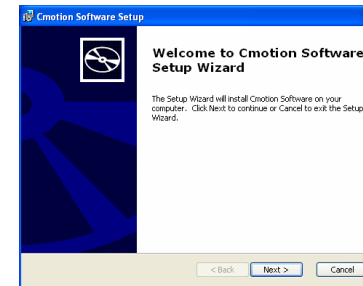
Insert the *cmotion* software CD / DVD Rom included with the *cmotion* system into the CD / DVD drive of the PC and follow the on-screen instructions. If the CD does not start automatically, select the drive manually from My Computer. It is advisable to save *clenscontrol* in an exclusive *cmotion* file or on the PC's Desk Top. Software should be saved in an appropriate directory.

Insert the micro CD Rom included with the *cmotion* system into the CD / DVD drive of the PC and follow the on-screen instructions. If the CD does not start automatically, select the drive manually from "My Computer".

1. Start File at DVD: *cmotion-3_1_19.msi* or higher version

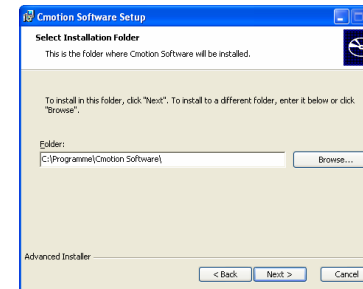
2. The setup wizard appears

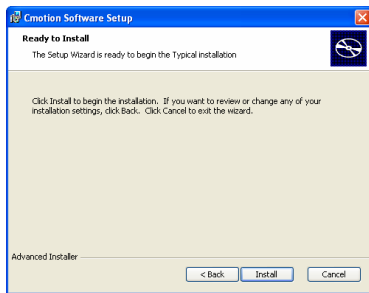
3. Click [NEXT] button



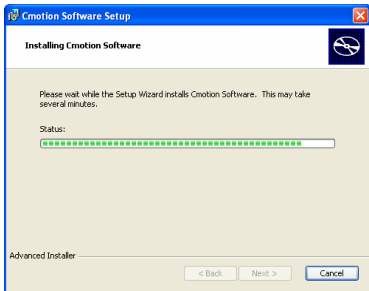
4. Select a folder where you want to store your programs and also the lens database

5. With [BROWSE...] button select or create a new folder. For Example: C:\My Folder\cmotion\



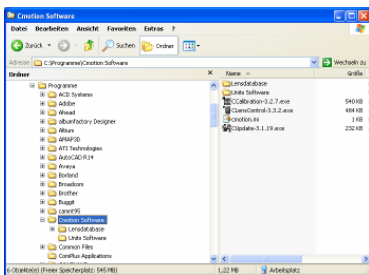


6. Click [INSTALL] button

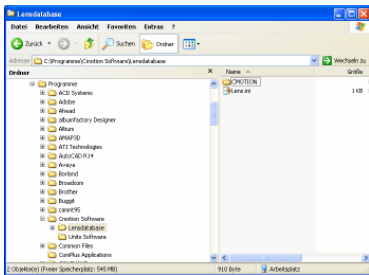


7. The file was copied to the PC

8. Press [FINISH] button to exit the Setup Wizard after the installation process.



9. After installation the folder structure appears in the following screenshots.



6.1. Loading new USB driver to the PC

If your PC has no RS232 port you can use a USB to serial converter or cable adapter

How to install:

1. Insert driver disk in your PC
2. Select "Manual" folder
3. Open the necessary manual depending of the computers operation system
4. Follow the instructions of this manual

Note: Do not connect the cmotion unit to the USB converter during driver installation